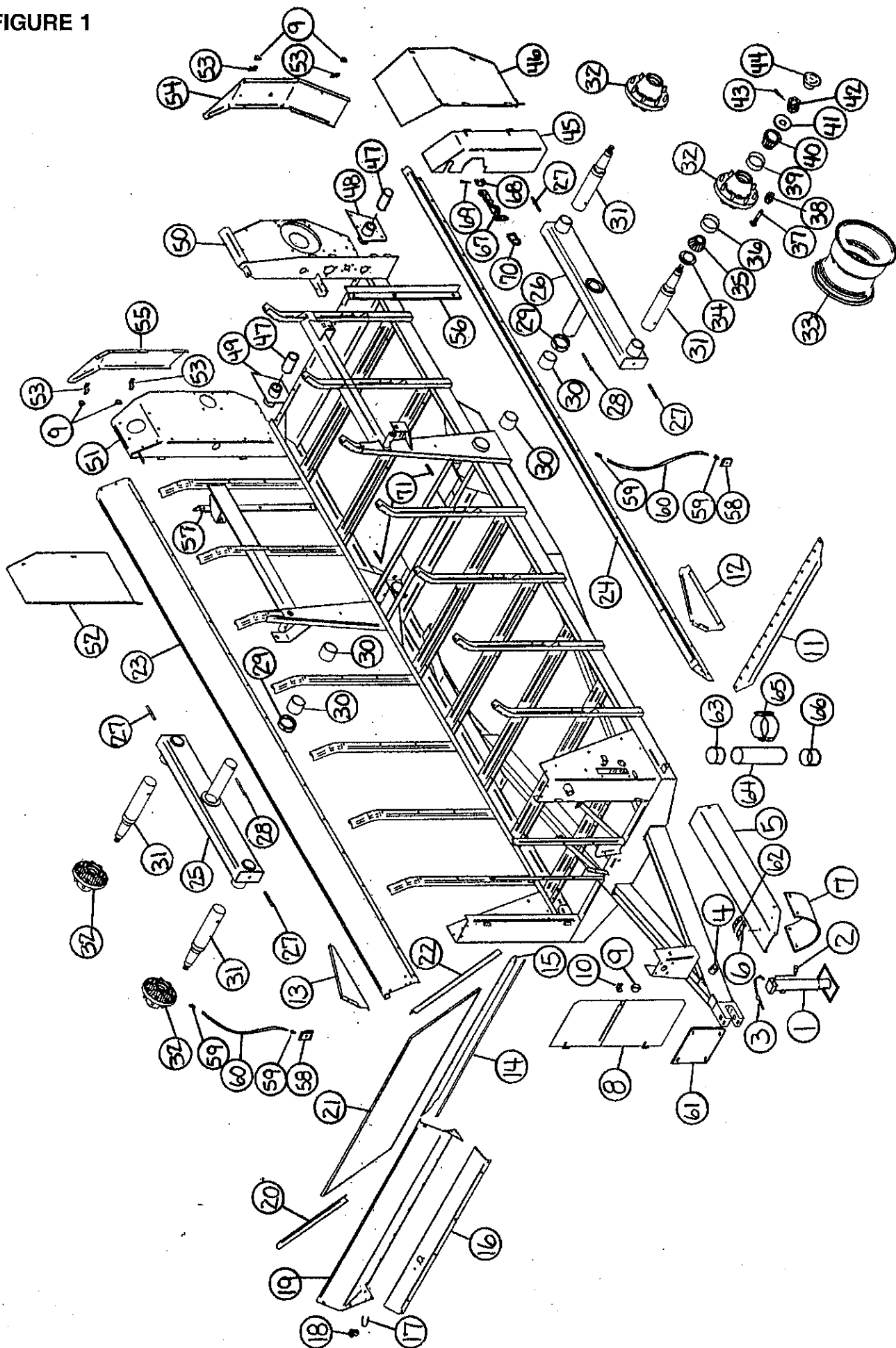


FIGURE 1

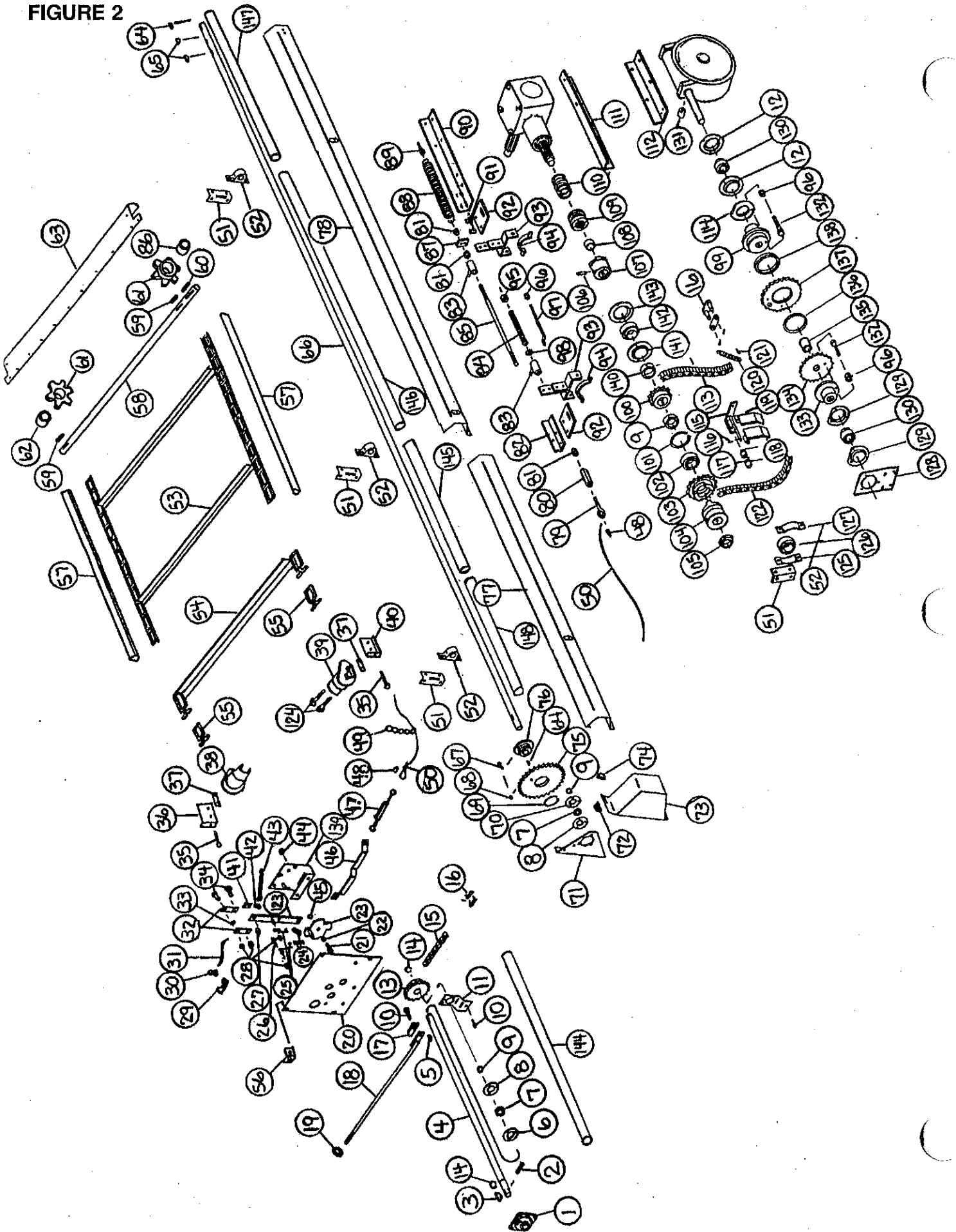


**FIGURE 1
FRAME ASSEMBLY**

ITEM	PART NO.	DESCRIPTIONS	ITEM	PART NO.	DESCRIPTIONS
1.	27N14	Jack	36.	RG169	Outer Race
2.	12N12	Jack Handle	37.	33SV41	Stud Bolt
3.	12N13	Jack Pin & Chain	38.	RG72	Stud Nut
4.	12N14	Jack Mount	39.	33SV44	Inner Race
5.	45N15	Jack Shaft Shield	40.	33SV43	Inner Bearing
6.	HE42	Hose Clamp-Front	41.	33SV95	Washer
7.	F54	Rubber PTO Shield	42.	RG17	1" Slotted Nut
8.	45N11	Front Shield Right	43.	33SV46	Cotter Pin
*	45N12	Front Shield Left	44.	RG171	Hub Cap
9.	F56	Clip Pin	45.	45N52	Two Speed Shield
10.	F92	Shield Angle	46.	45N6	Rear Shield
11.	23N46	Front Poly Floor Holddown	47.	23N17	Bushing
12.	23N42	LH Splash Guard	48.	37N78	LH Drive Shaft Bracket
13.	23N43	RH Splash Guard	49.	23N19	RH Drive Shaft Bracket
14.	23N40	Front Rubber Holddown	50.	45N8	Main Panel Left
15.	23N41	Front Rubber	51.	45N7	Main Panel Right
16.	23N176	Front Flare Support	52.	45N9	Top Beater Shield
17.	F32	U-Bolt - Used W/Optional Pan	53.	45N29	Shield Latch
18.	F33	Cable Guide - Used W/Optional Pan	54.	45N25	Main Panel End LH
19.	23N34	Front Flare	55.	45N26	Main Panel End RH
20.	45N24	Plywood Angle RH	56.	45N18	LH Side Poly Holder
21.	45N39	Front Poly Bonded Plywood	57.	45N19	RH Side Poly Holder
*	45N40	LH Poly Bonded Plywood	58.	16V9	Grease Line Bracket
*	45N41	RH Poly Bonded Plywood	59.	S47	Grease Fitting
*	45N38	Floor Poly Bonded Plywood	60.	31N43	Grease Line
22.	45N23	Plywood Angle LH	61.	45N20	Front Panel
23.	45N22	Side Flare RH	62.	23N67	Front Hose Bracket
24.	45N21	Side Flare LH	63.	S414	Cap
25.	45N3	RH Tandem Axle Beam	64.	S415	Tube
26.	45N2	LH Tandem Axle Beam	65.	S416	Hanger Bracket
27.	31N4	Roll Pin	66.	S418	Cap W/Hole
28.	BFR405	Bolt 1/2" x 5-1/2" GR.5	*	S421	Complete Manual Holder
29.	45N35	Axle Keeper	67.	X192	Front Shield Latch Rubber
30.	45N36	Axle Bushing	68.	X194	Latch Mounting Bracket
31.	33SV40	Spindle	69.	X195	Pin
32.	33SV45	Hub Assembly	70.	45N58	Latch Keeper
33.	33SV105	Wheel 16 x 16.1	*	45N59	Complete Latch Assembly
34.	33SV42	Seal	71.	45N57	Grease Line Adapter
35.	RG170	Outer Bearing			

NOTE: * (Means Not Shown)

FIGURE 2



**FIGURE 2
DRIVE ASSEMBLY**

ITEM	PART NO.	DESCRIPTIONS	ITEM	PART NO.	DESCRIPTIONS
1.	45N67	Bearing W/Holder	75.	45N68	23T Sprocket
2.	F26	Roll Pin 5/16" x 2-1/4"	76.	45N71	Shear Hub
3.	5B10	Key 1/4" x 1"	77.	45N16	Side Shield Front
4.	45N33	Front Shaft	78.	45N17	Side Shield Back
5.	5B9	Key 3/8" x 1-1/4"	79.	23N213	I-Bolt
6.	F114	Flange W/Zerk	80.	23N212	Coupling Nut
7.	F115	Bearing (Grease Type)	81.	K60	Nut 3/8"
8.	F14	Bearing Flange	82.	23N239	Shifter Support
9.	F16	Lock Collar	83.	23N206	Rod Bracket
10.	R10	Bolt	84.	23N211	Spring
11.	23N68	Front Adjustment Plate	85.	23N205	Clutch Rod
12.	4C7	Flange	86.	A5	LH Spacer
13.	43NW5	Sprocket 19T	87.	23N207	Spring Bracket
*	43NW21	Sprocket 11T (1000 RPM Option)	88.	K103	Spring
14.	F73	Snap Ring	89.	K79	I-Bolt
15.	43NW2	Roller Chain #80 x 92 Pitch	90.	43NW16	Top Angle
16.	F157	#80 Connector Link	91.	43NW15	Shifter Bracket Spacer
17.	23N278	Spacer	92.	23N86	Shifter Bracket
18.	23N63	Tightener Rod	93.	D57	Shifter Lever
19.	F129	Tightener Washer	94.	23N208	Yoke
20.	23N195	Shifter Panel	95.	23N209	Collar
21.	23N194	Bolt	96.	D65	Lock Nut
22.	K68	Washer	97.	23N210	Shifting Rod
23.	23N196	Speed Selector	98.	X67	Washer
24.	23N193	Shifter Dogs	99.	23N224	Shear Hub
25.	23N186	Dog Springs	100.	10R11	Sprocket 13T
26.	A15	Bolt 3/8" x 1"	101.	3G19	Snap Ring
27.	D107	Spacer	102.	23N218	Bearing
28.	K93	Lock Nut 3/8"	103.	23N216	Clutch Sprocket
29.	23N182	Bracket	104.	23N215	Clutch Throw-Out
30.	F33	Cable Guide	105.	F6	Collar
31.	23N183	Rope	106.	23N240	Setscrew
32.	23N184	Shifter Rope Bracket	107.	23N241	Clutch-Splined
33.	X67	Flat Washer 3/8"	108.	D66	Bronze
34.	B67	Bolt 3/8" x 1-1/4"	109.	23N90	Clutch-Splined
35.	23N130	Bolt 1/2" x 4-1/2" GR.5	110.	43NW17	Clutch Spring
36.	A29	RH Chain Slide Plate	111.	43NW18	Bottom Angle
37.	23N126	Chain Slide Spacer	112.	23N95	Worm Box Holder
38.	23N128	RH T-Rod Slide	113.	23N220	#50 Chain 59 Pitch
39.	23N127	LH T-Rod Slide	114.	23N222	Shear Plate
40.	A30	LH Chain Slide Plate	115.	31N36	Tightener Bracket
41.	23N185	Spring Bracket	116.	X43	Cotter Pin
42.	X79	S-Hook	117.	31N33	Spring Tightener
43.	23N187	Spring	118.	31N34	LH Tightener Bar
44.	R29	Nut	119.	31N35	RH Tightener Bar
45.	K68	Washer	120.	23N229	Dog Spring
46.	23N197	Shifter Arm	121.	X43	Cotter Pin
47.	F84	Turnbuckle	122.	23N93	#50 Chain 60 Pitch
48.	F44	Cable Loop	123.	23N192	Front Shifter Arm
49.	45N60	Cable Chain	124.	23N129	Carriage Bolt 1/2" x 4" GR.5
50.	37N53	Cable	125.	12N35	Holder
51.	23N97	Side Bearing Bracket	126.	12N33	Bearing
52.	12N36	Bearing	127.	12N34	Bearing Cover
53.	37N42	Apron Chain 28 Slats, 280 Links	128.	23N230	Bearing Panel
54.	23N124	Slat W/Att. Links	129.	X85	Flange
55.	S55	T-Rod Standard Link	130.	23N221	Bearing
56.	T120	Angle	131.	23N94	Spacer
57.	37N43	Apron Chain Side Spacers	132.	23N223	Shear Bolt
58.	27N19	Drive Shaft	133.	D63	Shear Hub
59.	23N303	Key 3/8" x 1-3/4" Sq.	134.	D64	Shear Sprocket 25T
60.	S138	Key 3/8" x 2-3/8" Sq. W/Round Ends	135.	23N228	Spacer
61.	45N34	Drive Sprocket 6T	136.	23N227	Snap Ring
62.	D79	RH Spacer	137.	23N226	Sprocket 30T
63.	23N119	Rear Poly Holddown	138.	23N225	Bronze
64.	5B9	Woodruff Key 3/8" x 1-1/4"	139.	23N188	Front Shifter
65.	5B10	Woodruff Key 1/4" x 1"	140.	WM27	Lock Collar
66.	43NW19	Side Shaft	141.	F143	Flange W/Zerk
67.	LW134	Shear Bolt 3/8" x 1-1/2"	142.	WM29	Bearing
68.	K93	Lock Nut 3/8"	143.	F145	Flange
69.	23N189	Snap Ring	144.	45N61	PTO Shaft PVC Guard
70.	F114A	Flange	145.	45N62	Front Side Shaft PVC Guard
71.	23N74	Bearing Plate	146.	45N63	Middle Side Shaft PVC Guard
72.	23N242	Shield Bracket	147.	45N64	Back Side Shaft PVC Guard
73.	23N80	Front Side Shield	148.	45N72	Front Side Shaft PVC Guard
74.	F56	Clip Pin			

FIGURE 3

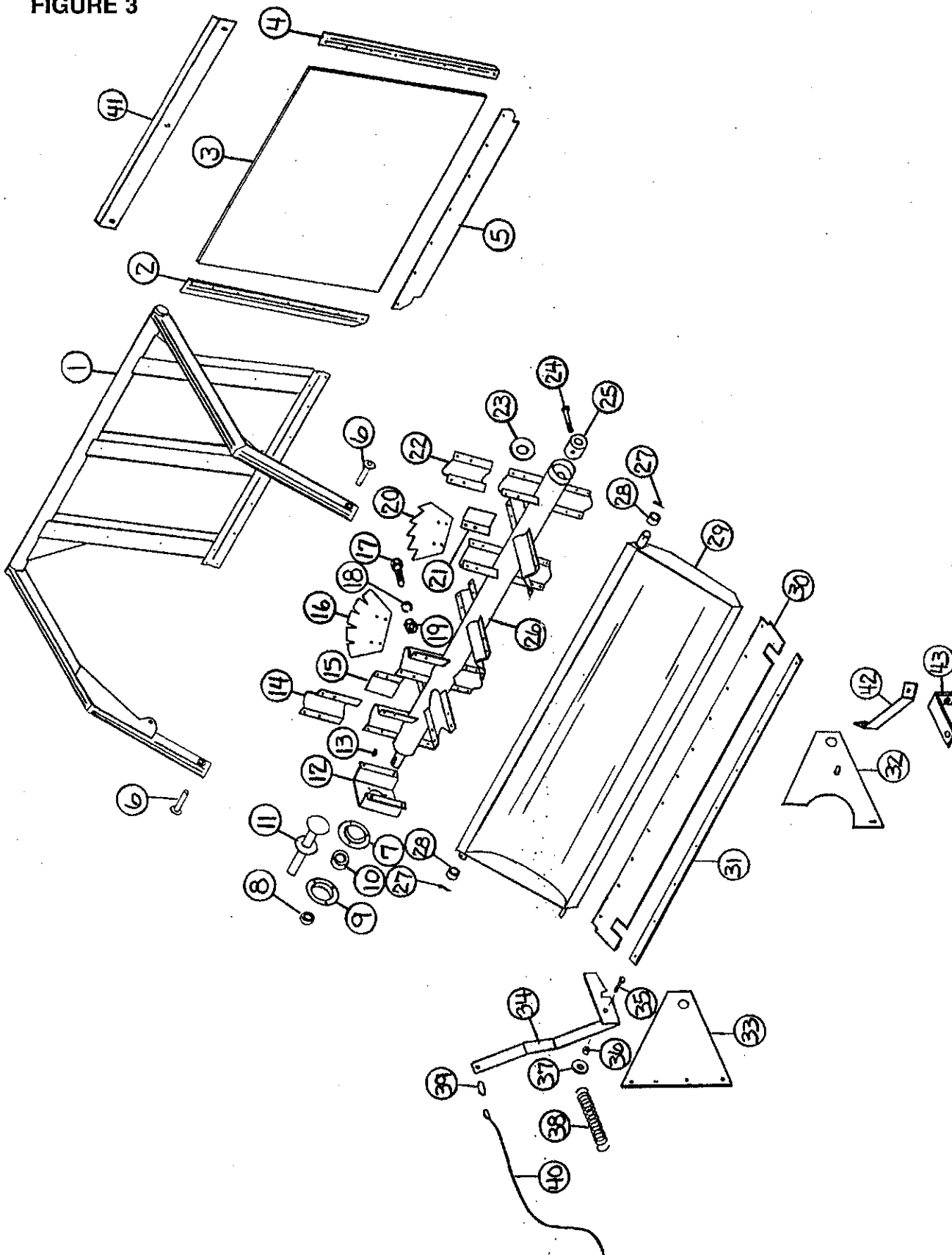
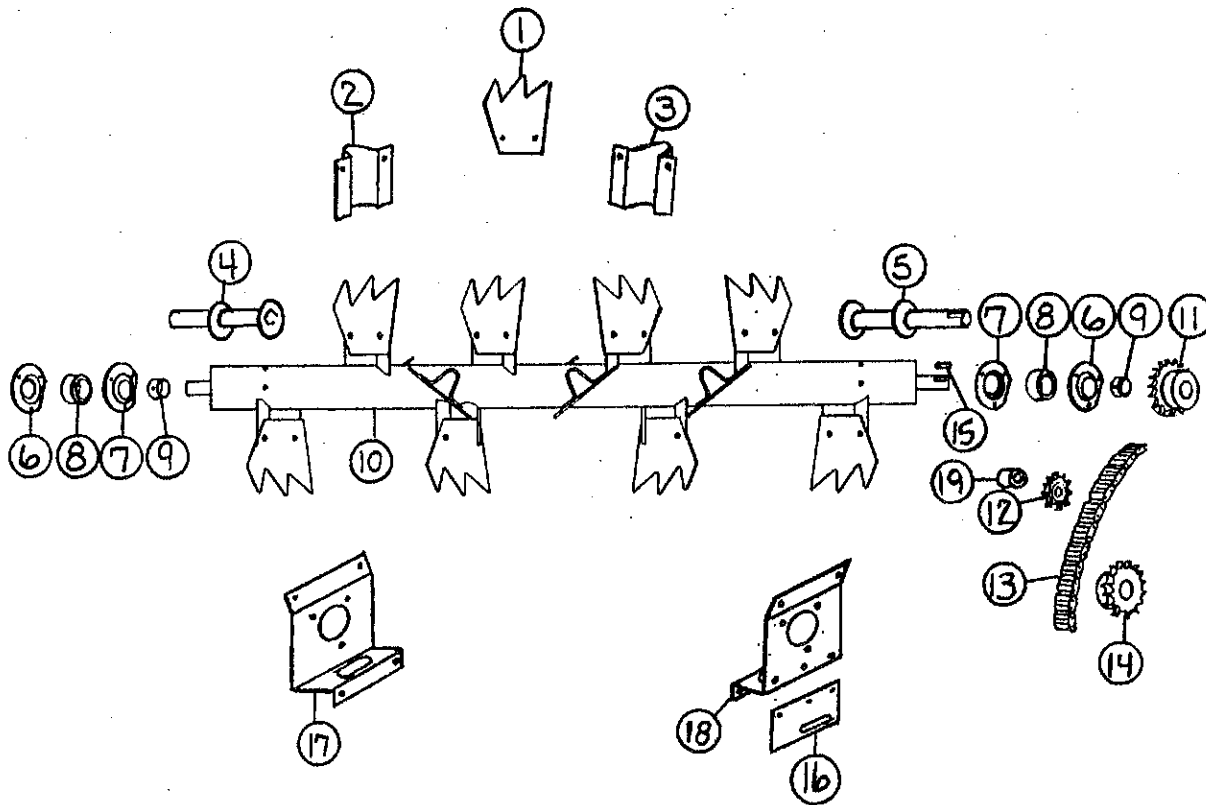


FIGURE 3
ENDGATE-BEATER-PAN ASSEMBLY

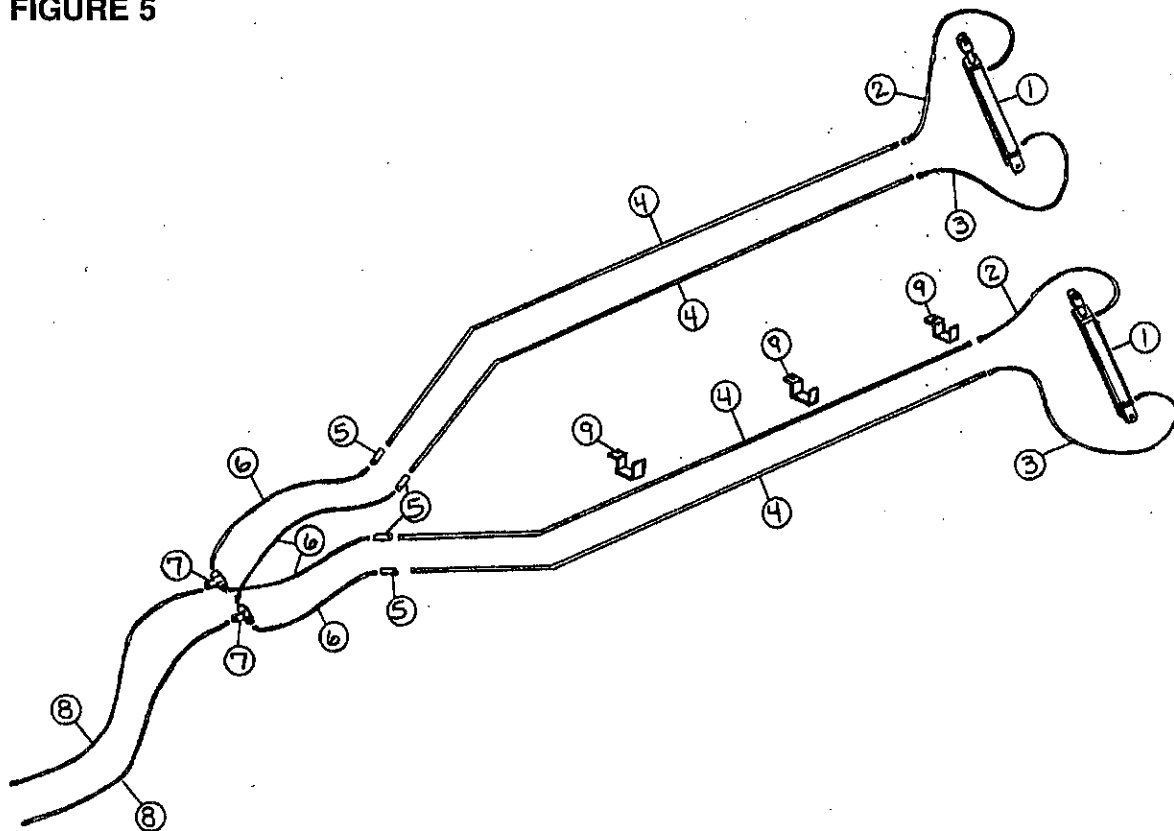
ITEM	PART NO.	DESCRIPTIONS
1.	45N4	Tailgate Frame
2.	45N32	RH Side Rubber
3.	45N37	Tailgate Polybonded Plywood
4.	45N31	LH Side Rubber
5.	23N105	Bottom Tailgate Rubber
6.	45N10	Tailgate Pin
7.	F116	Flange-Heavy Duty
8.	F16	Lock Collar
9.	F114A	Flange W/45 Degree Zerk
10.	F115	Bearing
11.	23N11	RH Stub Shaft
12.	23N10	Beater Shaft Support
13.	5B9	Key 3/8" x 1-1/4" Woodruff
14.	23N4	RH Blade Holder
15.	23N8	Beater Blade Wiper RH
16.	23N276	Beater Blade
17.	R10	Beater Bolt 1/2" x 1-1/4" GR.5
18.	R35	Lock Washer 1/2"
19.	R11	Lock Nut 1/2"
20.	23N277	Beater Blade
21.	23N7	Beater Blade Wiper LH
22.	23N3	LH Blade Holder
23.	16SV353	Seal
24.	23N1	5/16" x 5" GR.5 Bolt
25.	43NW1	Splined Beater Insert
26.	43NW2	Beater
27.	R70	Cotter Pin
28.	F112	Spacer
29.	23N30	Pan
30.	23N24	Pan Rubber Flap
31.	23N25	Pan Strap
32.	45N47	LH Pan Support
33.	45N65	RH Pan Support
34.	23N21	Pan Trip Lever
35.	23N22	1/2" x 1-1/2" Carriage Bolt
36.	23N23	Trip Lever Support
37.	A34	1/2" Flat Washer
38.	R27	Spring
39.	R31	Clip
40.	37N5	Pan Trip Rope
41.	45N66	Poly Holddown
42.	45N69	Pan Support Brace
43.	45N70	Pan Support Angle



**FIGURE 4
2ND BEATER**

ITEM	PART NO.	DESCRIPTIONS
1.	45N27	Beater Blade
2.	45N53	Blade Holder A Left
3.	45N54	Blade Holder B Right
4.	45N14	LH Stub Shaft
5.	45N5	RH Stub Shaft
6.	45N48	Flange-Sheared W/45 Deg. Zerk
7.	45N55	Flange-Sheared
8.	WM29	Bearing
9.	WM27	Lock Collar
10.	45N13	Beater
11.	F13	Sprocket 20T
12.	12N42	Idler Sprocket
13.	45N49	#60 Chain 96 Pitch
14.	23N70	Sprocket 25T
15.	5B9	Key 3/8" x 1-1/4" Woodruff
16.	45N28	2nd Beater Tightener Mount
17.	45N56	Bearing Bracket LH
18.	45N46	Bearing Bracket RH
19.	IFB23	Spacer

FIGURE 5



**FIGURE 5
HYDRAULICS**

ITEM	PART NO.	DESCRIPTIONS
1.	45N45	Hydraulic Cylinder
2.	12V19	Hydraulic Hose 24"
3.	12V20	Hydraulic Hose 44"
4.	45N30	Hydraulic Pipe
5.	HE60	Coupling 3/8"
6.	45N51	Hydraulic Hose 41"
7.	BFR74	Tee 3/8"
8.	45N50	Hydraulic Hose 120"
9.	HE14	Hydraulic Pipe Bracket

FIGURE 6

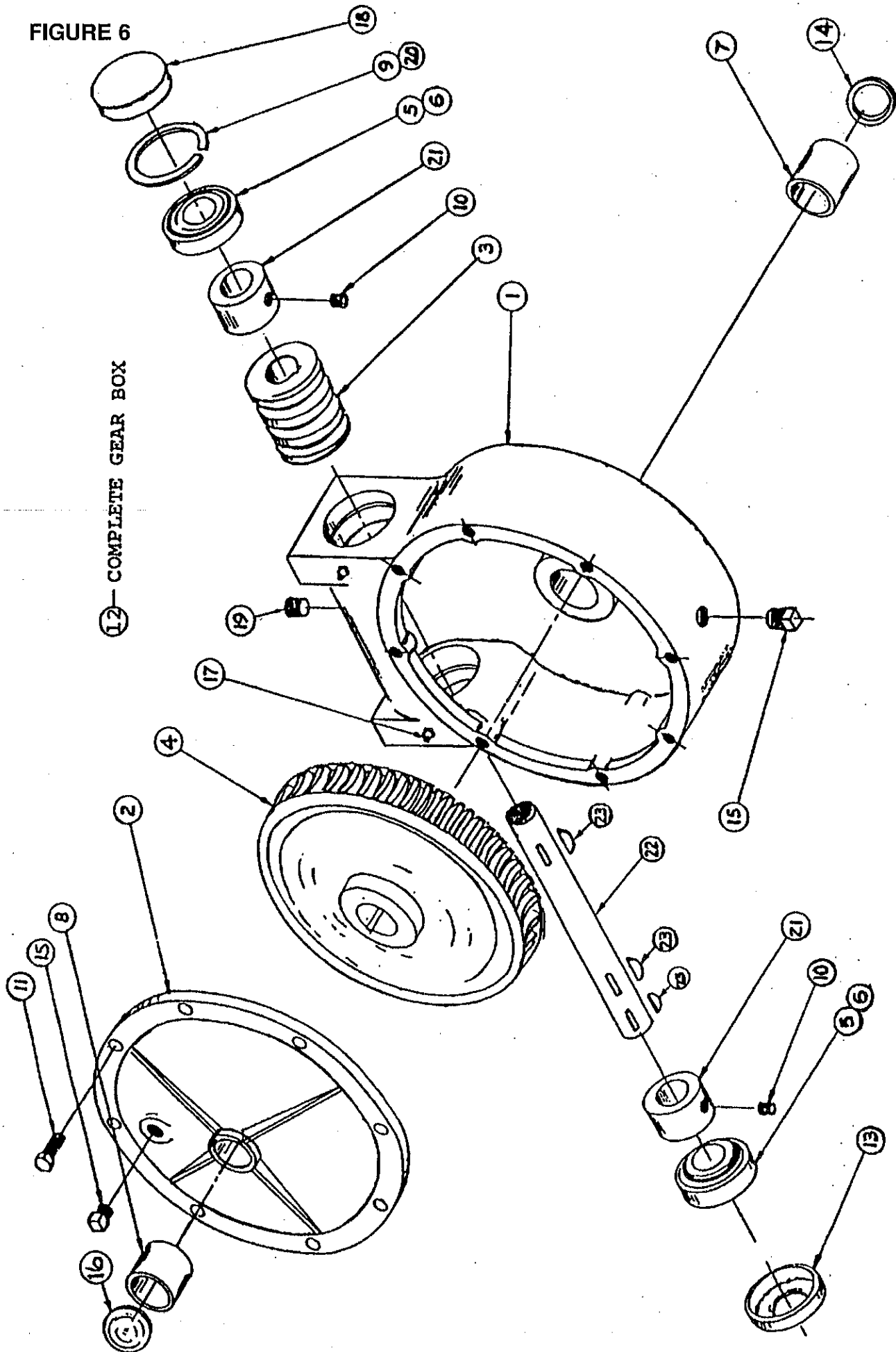
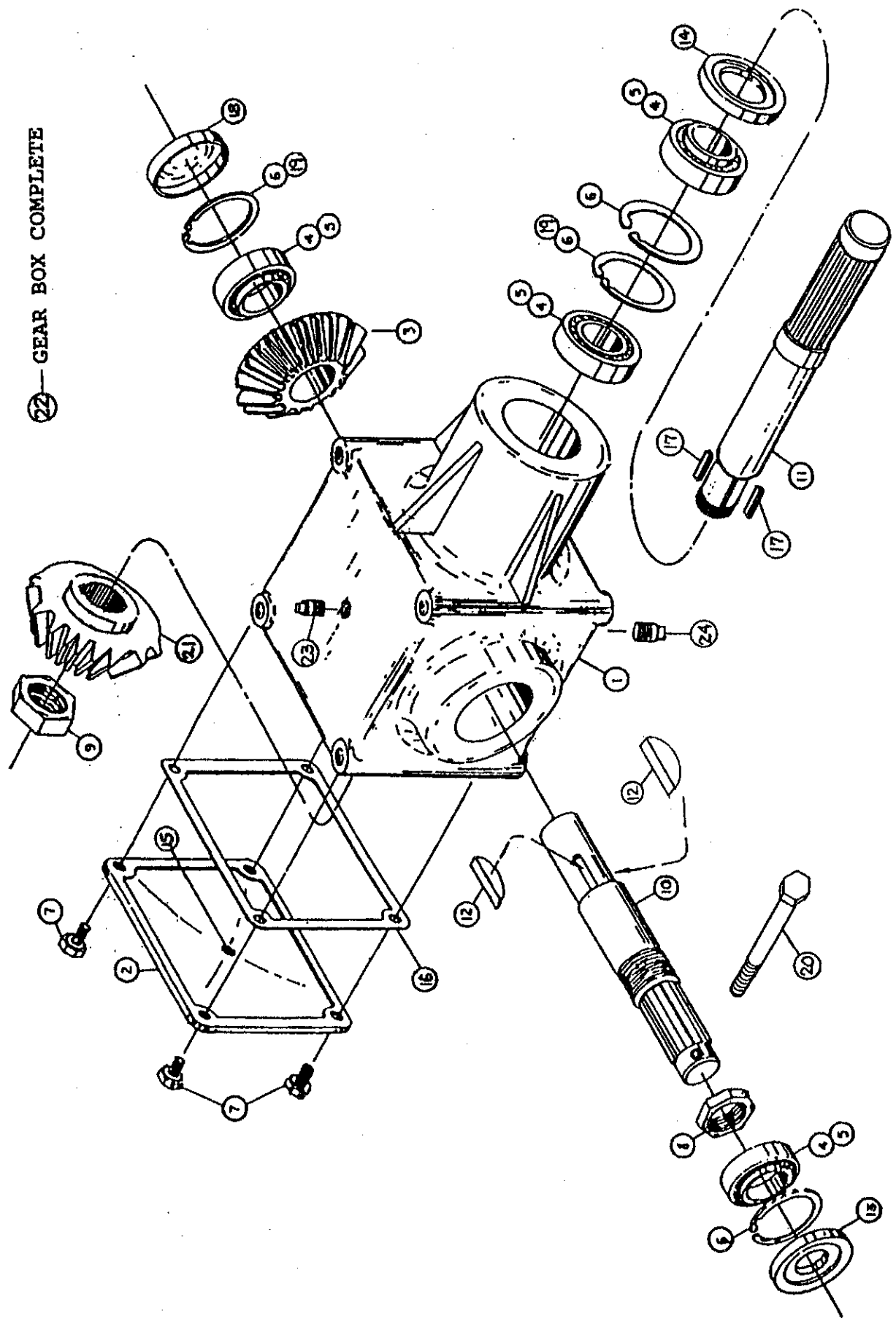


FIGURE 6
WORM GEAR BOX ASSEMBLY

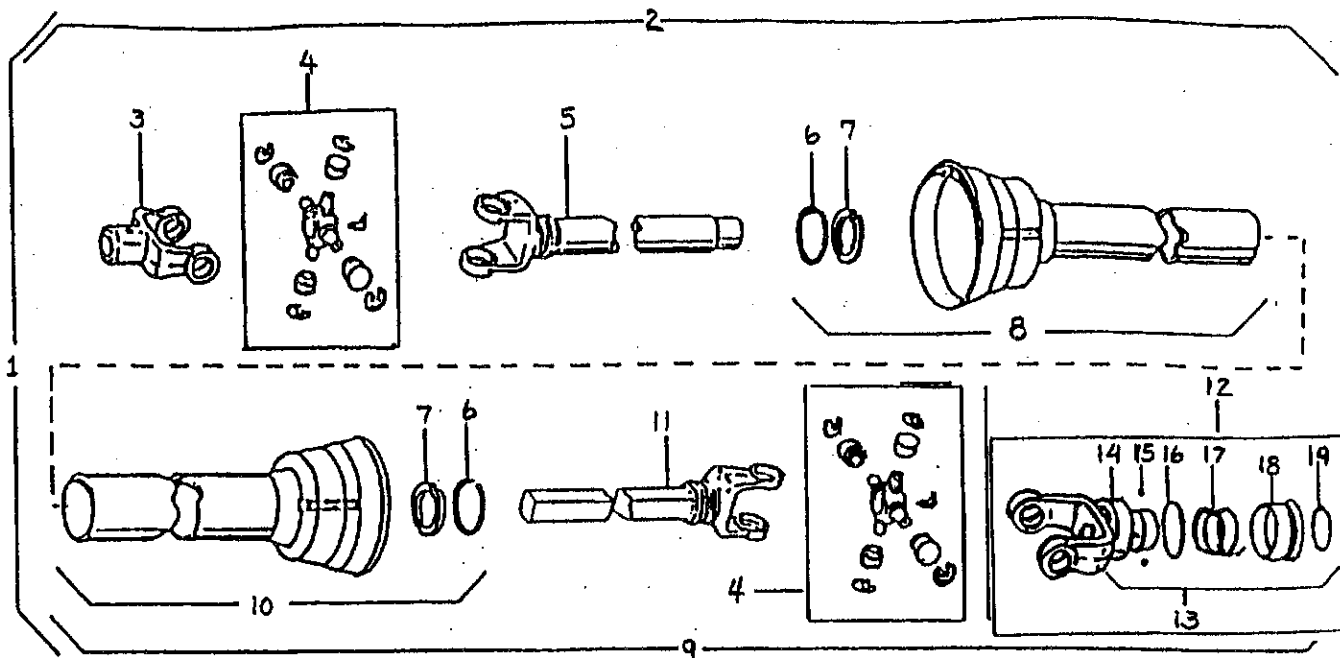
ITEM	PART NO.	DESCRIPTIONS
1.	G114	Housing
2.	G116	Cover
3.	G76	Worm
4.	G77	Worm Gear
5.	G78	Bearing #15101
6.	G79	Bearing Cup #15245
7.	X8	Bearing Oil Lite
8.	G81	Bearing Oil Lite
9.	G82	Snap Ring
10.	G83	Setscrew 3/8" NC x 3/8" Long
11.	G84	Capscrew 3/8" NC x 1" Long
12.	G122	Worm Gear Box Complete
13.	G123	Seal
14.	17G133	Seal
15.	G65	Plug 3/8" NPT
16.	G117	Cap 1-7/8"
17.	G89	Zerk 1/4-28
18.	G90	Cap
19.	G91	Vent Plug 3/8" NPT
20.	G92	Shim
21.	G93	Spacer
22.	23N236	Worm Gear Shaft
23.	5B10	1/4" x 1" Woodruff Key

FIGURE 7



**FIGURE 7
BEVEL GEAR BOX**

ITEM	PART NO.	DESCRIPTIONS
1.	G125	Housing
2.	G126	Cover
3.	G127	Bevel Gear 33T
4.	G128	Bearing Cup #25520
5.	G129	Bearing Cone #25581
6.	G130	Snap Ring
7.	G131	Capscrew
8.	G132	Stake Nut
9.	G133	Stake Nut
10.	G134	Shaft-Output
11.	G135	Shaft-Input
12.	G61	"E" (1210) Woodruff Key(Hard)
13.	G136	Seal-Output
14.	G137	Seal-Input
15.	G65	Plug 3/8" NPT
16.	G138	Gasket
17.	G139	Key 3/8" Sq. x 1-1/2" (Hard)
18.	G140	Cap
19.	G141	Shim
20.	23N1	5/16" x 5" Bolt GR.5
21.	G142	Bevel Gear 22T-Splined
22.	G143	Bevel Gear Box Complete
23.	G144	Vent Plug
24.	G145	Plug



**FIGURE 8
PTO ASSEMBLY**

ITEM	PART NO.	DESCRIPTIONS
1.	23N152	PTO Assembly Complete W/Shields
2.	23N153	Machine Half PTO W/Shield
3.	G1R35	End Yoke Machine Half
4.	14NW Kit	Repair Kit
5.	23N155	Yoke And Tube
6.	24N26	Bearing Retainer
7.	4N20	Nylon Bearing
8.	23N156	Inner Guard Including Item #6 & #7
9.	23N157	Tractor Half PTO W/Shield
10.	23N158	Outer Guard Including Item #6 & #7
11.	23N159	Yoke And Shaft
12.	23N162	Lock Yoke Assembly
*	37N73	Lock Yoke Assembly (1000 RPM-1/3/8")
13.	S225	Spring Lock Repair Kit
14.	S226	Cover
15.	S212	Stainless Ball
16.	S227	Washer
17.	S228	Spring
18.	S229	Collar Assembly
19.	S215	Retaining Ring

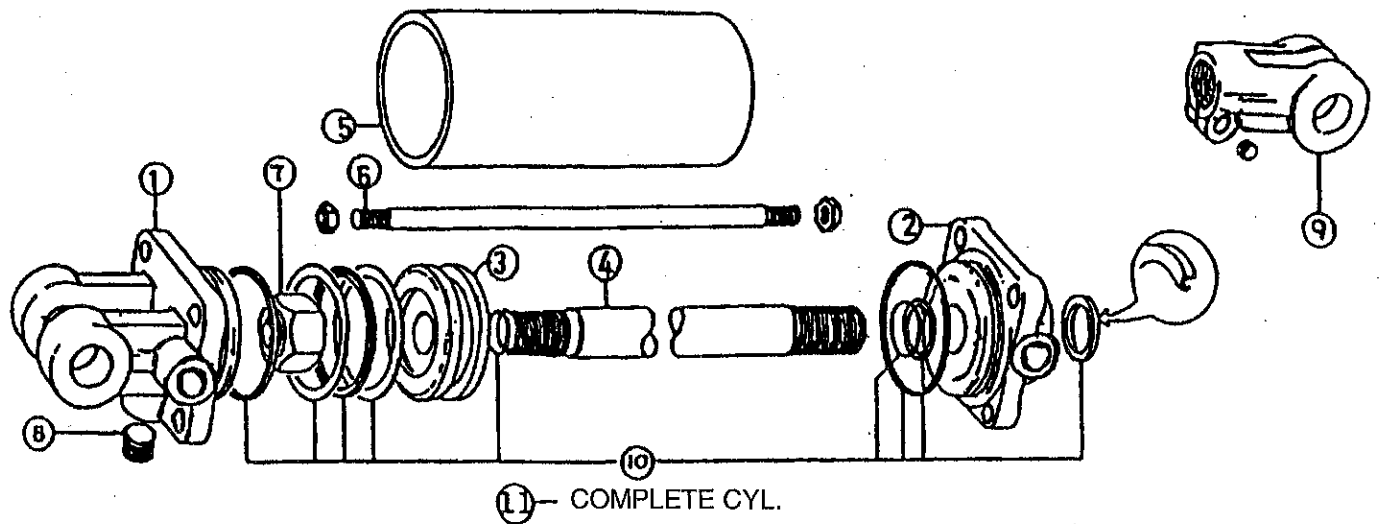
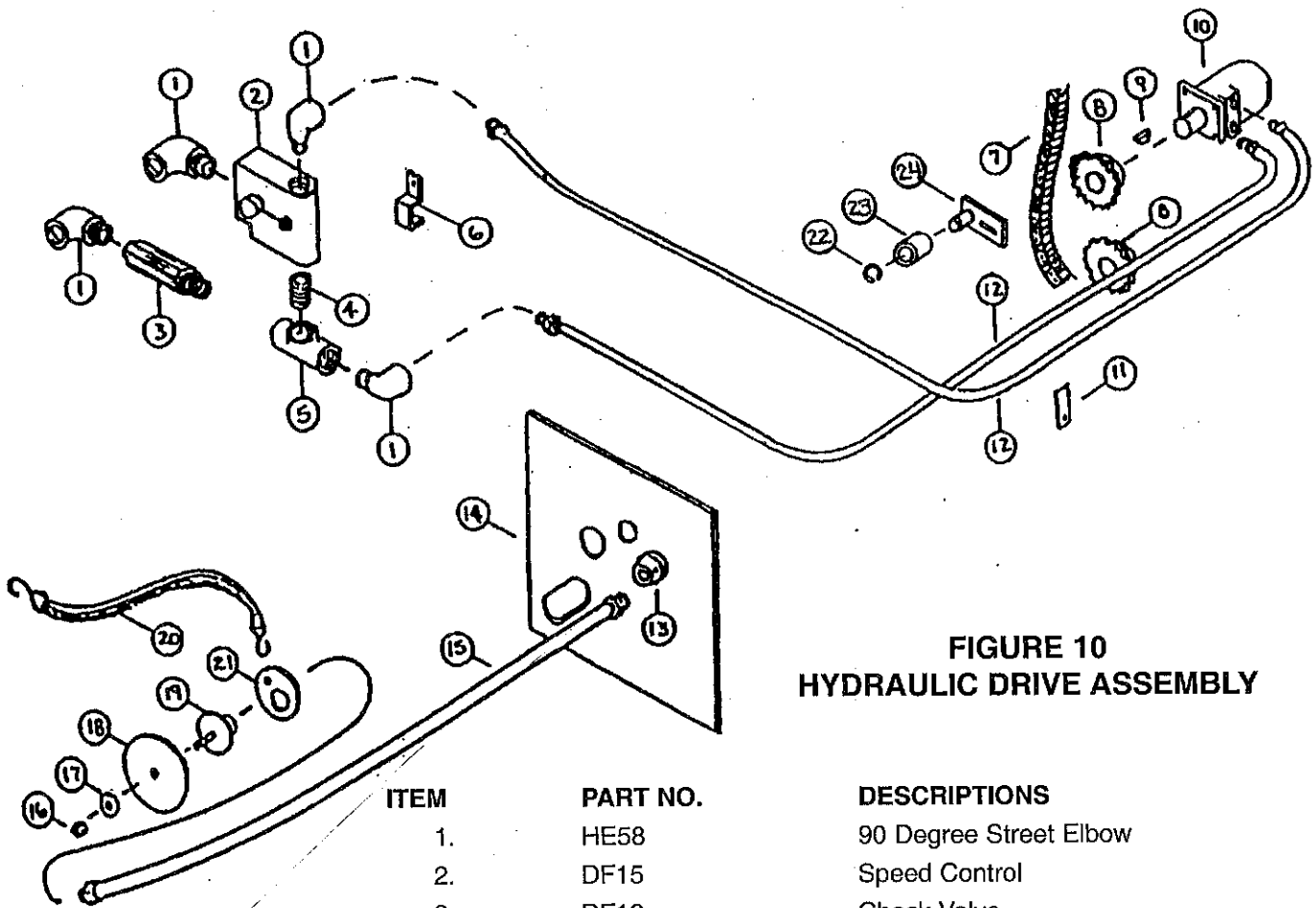


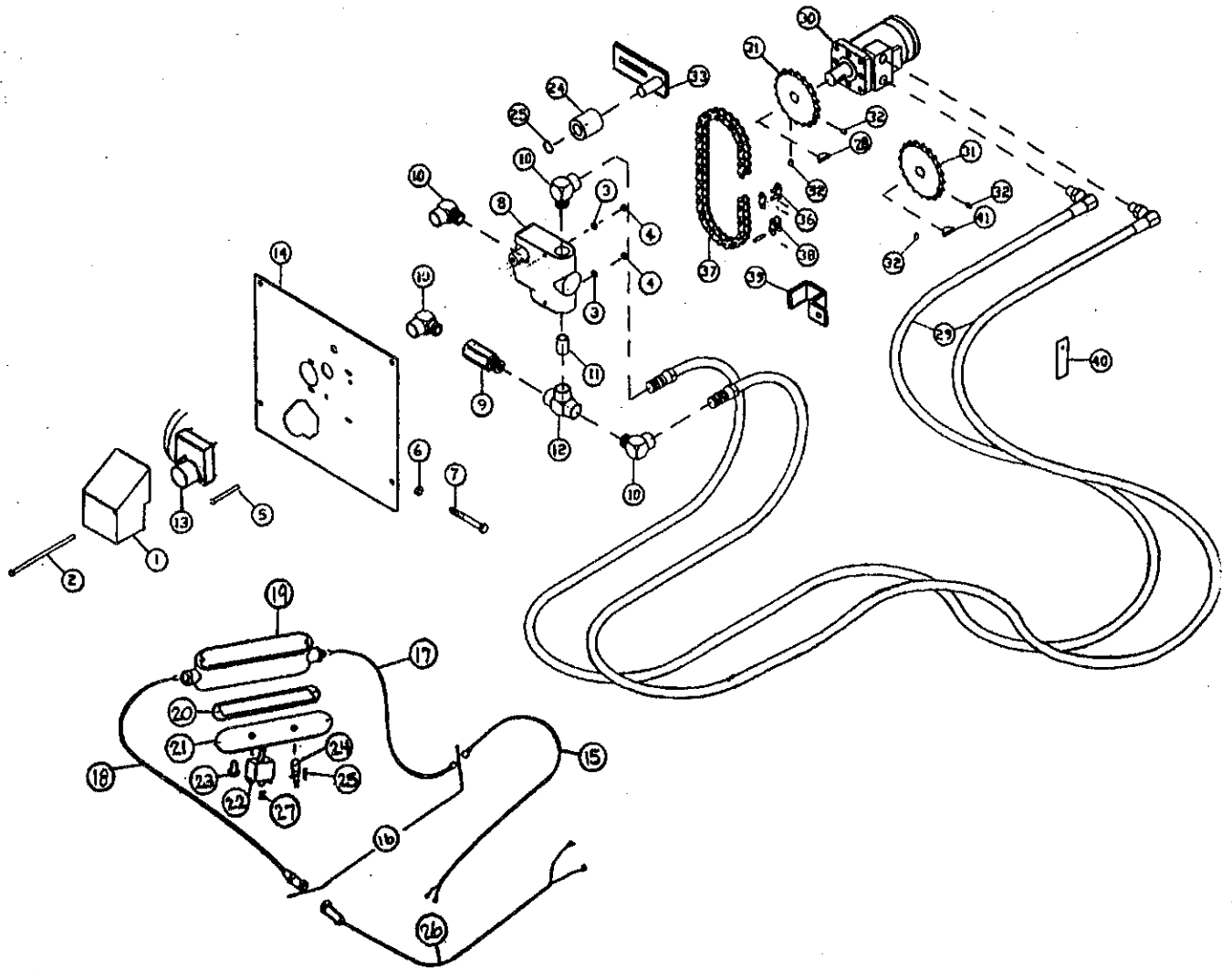
FIGURE 9
HYDRAULIC CYLINDER

ITEM	PART NO.	DESCRIPTIONS
1.	23N142A	Clevis Cap
2.	23N143A	Rod Cap
3.	23N144	Piston
4.	45N42	Rod
5.	45N43	Cylinder Tube
6.	45N44	Tie Rod
7.	23N148	Piston Nut
8.	23N149	Plug
9.	23N150A	Rod Clevis
10.	23N151	Seal Kit
11.	45N45	Hydraulic Cylinder



**FIGURE 10
HYDRAULIC DRIVE ASSEMBLY**

ITEM	PART NO.	DESCRIPTIONS
1.	HE58	90 Degree Street Elbow
2.	DF15	Speed Control
3.	DF18	Check Valve
4.	DF7	Nipple
5.	DF8	Tee
6.	HE14	Hose Bracket
7.	23N131	#50 Chain 40 Pitch
8.	11S19	20T Sprocket
9.	5B10	1/4" x 1" Woodruff Key
10.	PB64	Hydraulic Motor
11.	23N117	Hose Holder
12.	45N73	Hydraulic Motor Hose
13.	DF21	Reducer
14.	23N133	Control Panel
15.	DF9	Hose for Handle
16.	K93	3/8" Lock Nut
17.	DF12	Washer
18.	DF11	Handle
19.	DF10	Handle Bracket
20.	DF14	Strap
21.	DF22	Ring For Strap
22.	10R32	Snap Ring
23.	23N238	Chain Tightener Roller
24.	L10R35	Tightener Bracket



**FIGURE 11
OPTIONAL ELECTRIC CONTROL**

ITEM	PART NO.	DESCRIPTION	ITEM	PART NO.	DESCRIPTION
1.	43H1	Motor Shield/Holder	22.	16SV319	Auger Speed Switch
2.	43H3	Shield Bolt 1/4" x 6"	23.	16SV235	Flow Control Switch Boot
3.	K84	1/4" Lockwasher	24.	16SV231	Fuse Holder
4.	K85	1/4" Nut	25.	16SV232	Fuse, 5 Amp. (AGC-5)
5.	43H4	Flow Control Bolt 1/4" x 2-1/4" Carr.	26.	16SV269	Tractor End
6.	K93	3/8" Flow Indicator Lock Nut	27.	BFR320	Flag
7.	43H5	Flow Indicator Bolt 3/8" x 3"	28.	5B10	1/4 x 1" Woodruff Key
8.	DF15	Flow Control	29.	45N73	Hyd. Motor Hose
9.	DF18	Check Valve	30.	PB64	Hyd. Motor
10.	HE58	1/2" Street Elbow	31.	11S19	Drive Sprocket
11.	DF7	1/2" Short Nipple	32.	—	5/16" Setscrew
12.	DF8	1/2" Tee	33.	L10R35	Tightener Bracket
13.	16SV246	Gear Motor	34.	23N238	Tightener Roller
14.	23N133	Control Panel	35.	10R32	Snap Ring
15.	16SV272	Spreader Control Cord	36.	X61	#50 Chain Connector
16.	16SV321	Control End Complete	37.	23N131	#50 Chain X 40 Pitches
17.	16SV270	Tractor Power Supply	38.	X60	#50 Chain Offset
18.	16SV271	Control Box Power Supply	39.	HE14	Hose Bracket
19.	16SV316	Control Box	40.	23N117	Hose Holder
20.	16SV317	Control Box Gasket	*	16SV321	Complete Control Box
21.	16SV318	Control Box Cover			

NOTE: * (Means Not Shown)

- SERVICE NOTES -

Lined area for service notes with horizontal ruling lines.